

CITY OF HAMMOND

department of motor vehicles

WORK STATION REPLACEMENT



pistoriusassociates, llc
ARCHITECTS
 mail post office box 673
 hammond, la 70404
 office 109 1/2 west thomas
 hammond, la 70401
 phone 985-542-4287

SECTION 12 3216
MANUFACTURED PLASTIC LAMINATE CLAD CASEWORK

PART 1 GENERAL

- 1.1 SUMMARY
- A. Section Includes: Furnish and install Manufactured Plastic Laminate Clad Casework as shown on Drawings and as specified herein.
- 1.2 SUBMITTALS
- A. General: Submittals requirements are specified in Section 01 3300, Submittal Procedures.
- B. Shop Drawings: Submit brochures and Shop Drawings of items showing sizes of members, methods of construction, mounting techniques and clearly indicated locations of any visible seams or joints in plastic laminate countertops.
- C. Samples: Submit two (2) samples of all laminates, door and drawer pulls, PVC edging, and melamine colors used.
- 1.3 QUALITY ASSURANCE
- A. Manufacturers/fabricators shall meet the Architectural Woodwork Institute (AWI) standards.
- B. Installer Qualifications: Installation shall be supervised by manufacturer's trained and authorized personnel. The installing subcontractor shall hold a valid Arizona Contractor's license where required by law, and have a minimum of five (5) years experience in casework installation.
- 1.4 DELIVERY, STORAGE AND HANDLING
- A. Packing and Shipping: Deliver materials to site in manufacturer's original unopened packaging with labels intact.
- B. Storage and Protection: Adequately protect against damage while stored at the site. Store away from construction traffic under protective cover.
- C. Casework shall not be delivered until building(s) are ready for installation. Wet operations (i.e. plastering, painting) shall be complete.
- 1.5 PROJECT CONDITIONS
- A. Field Measurements: Verify dimensions shown on Drawings by taking field measurements; proper fit and attachment of parts is required.

PART 2 PRODUCTS

- 2.1 MATERIALS
- A. Particleboard: Minimum 47 pound density, "western" fir, meeting or exceeding ANSI A208.1-1999 requirements with moisture content 8 percent or less. Thicknesses as specified herein. Provide moisture resistant particleboard at sinks and all wet locations.
- B. Hardboard: Pre-finished, 1/4 inch thickness, meeting or exceeding CS-251.
- C. Plywood: 6-ply hardwood.
- D. Plastic Laminate:
- Vertical Grade: High pressure decorative laminate, NEMA LD-3, Grade QP28 (.028 inch thickness), color as selected. This grade of laminate shall be counterbalanced.
 - Cabinet Liner Grade: High pressure cabinet liner, NEMA LD-3, Grade CL-20 (.020 inch thickness). Color shall be white one color only for this Project. This grade of laminate shall be counterbalanced.
 - Melamine: Tested to meet NEMA Test LD-3. Color shall be white one color only for this Project. This grade of laminate shall be counterbalanced.
 - Backer: High pressure backer, NEMA LD-3, Grade BK-20 (.020 inch thickness). Color shall be white one color only for this Project. This grade of laminate shall be counterbalanced.
 - Color: High pressure laminate for exposed exterior surfaces shall be selected by the Architect.
- E. Edge Trim:
- Hot melt glue applied 3mm PVC banding with eased corner. Manufacturer shall be Woodtop or prior approved equal. Color shall be manufacturer's standard as selected; a maximum of one color per unit face and a maximum of five colors for this Project. Extruded barbed "T" design polyethylene edging is not acceptable.
 - Where open shelves and cabinets occur, cabinet front edge banding shall match specified cabinet laminate color.
- F. Metal Parts: Countertop support brackets, legs and miscellaneous metal parts shall be furniture steel, welded, degreased, cleaned, treated and powder painted in colors as selected by Architect.
- G. Hardware:
- Pulls: Wire Pulls manufactured by Hafele or prior approved equal, finish to be brushed aluminum.
 - Hinges: European concealed hinges, Blum 170 series hinges. Heavy duty, Overlay type, self closing, free swing hinges. Door shall swing 170 degrees. Finish shall be nickel plated.
 - Drawer Guides: Slide mounted, full extension, clear zinc-plated steel drawer slides with all steel ball bearings, rated for the following loads:
 - Light and medium duty drawers 16 inches wide or less: Accuride 9832PC self-closing, lever disconnect, with a 100 lb./pr. load rating, or prior approved equal.
 - Light and medium duty drawers 24 inch wide or less: Accuride 7432 rail mounted, hold-in detent, with a 100 lb./pr. load rating and progressive movement, or prior approved equal.
 - File Drawers 24 inches wide or less: Accuride 4034 rail mounted, full extension plus 1 inch over travel slide, hold-in detent with a 150 lb./pr. load rating and progressive movement, or prior approved equal. Equip sides of file drawer with extruded aluminum edge on sides, or full Pendaflex folder hanger arrangement designed to support hanging file folder.
 - Paper Storage Drawers 42 inches wide or less: Accuride 9340 full extension plus 1 inch over travel slides, hold-in detent, with 200 lb./pr. load rating or prior approved equal.
 - Very wide heavy duty drawers: Accuride 9301 ball bearing, no disconnect, full extension slide up to a 500 lb. load rating or prior approved equal.
 - Kneespace Pencil Drawers: Hafele Catalog No. 429.57.300. Hafele: 800-423-3531.
 - Under counter support brackets: Rakks Counter support bracket EH-1818, 450 lbs/bracket. Finish: mill aluminum. Flangine Corporation: 800-828-6006, or prior approved equal.
 - Magnetic Catches: Provide minimum 6 pound pull per catch for base and wall cabinets, and minimum 14 pound pull per catch for tall cabinets.
 - Grommets: 2-1/2 inch Hole grommet with "Flip-Top", Doug Mockett Company, Inc. Available through Louis and Company, (800) 472-7755. Color to be black.

2.2 FABRICATION

- A. General:
- Casework shall meet or exceed the Custom Plastic Laminate Casework standards per the Architectural Woodwork Institute Standards for "custom" grade.
 - Fabricate casework to dimensions, profiles and details shown.
 - Assemble units in the shop in as large size of components as practicable to minimize field cutting and jointing.
 - Joints to be dowelled and glued under pressure or joined with splines and glued under pressure.
 - Thicknesses and materials for components shall meet or exceed AWI Standards for the level of quality specified.

6. All cabinets reveal overlay construction unless noted otherwise.

B. Cabinet Joinery:

- Dowels: Hardwood with chamfered ends and a minimum diameter of 8-10 millimeters, securely glued with cabinets clamped under pressure during assembly to assure secure joints and cabinet squareness.
- Splines: Approximately 3 per foot, glued under pressure.
- Tops and bottoms: Joined to cabinet ends using a minimum of 6 dowels for 24 inch deep cabinets and a minimum of 4 dowels for 12 inch deep cabinets.
- Internal cabinet components such as fixed horizontals, rails and verticals shall be dowelled in place.

C. Bases:

- Base and tall units shall have a separate and continuous 3/4" water resistant plywood cabinet subbase with concealed fastening to cabinet bottom.
- Form a secure and level platform to which cabinets attach.
- Rubber or vinyl base covering, where shown on Drawings, shall be furnished and applied in accordance with the requirements of other sections of this Project Manual.

D. Cabinet Top and Bottom:

- Particleboard, 11/16 to 3/4 inch thick, factory laminated on the interior with high pressure cabinet liner with a backer sheet of a neutral color on the unexposed surface.
- Front edges: 3mm PVC edging.
- Sub-tops: Solid except for sink base tops.
- Bottom surface of upper cabinets: High pressure laminate cabinet liner. Color to match concealed cabinet interior.
- Completely finish cabinet interior with high pressure plastic laminate when all surfaces are exposed.
- Supply cabinets over 42 inches wide and up to 72 inches in height with a finished 3/4 inch continuous top in addition to the sub-top with 3mm PVC edging.

E. Cabinet Ends:

- Semi-exposed cabinet ends: Particleboard, 11/16 to 3/4 inch thick, factory laminated on the interior with high pressure cabinet liner and a backer sheet of a neutral color on the exterior semi-exposed surface.
- Exposed cabinet ends: Laminated with vertical surface high pressure laminate on the exterior and high pressure laminate cabinet liner, color as selected by Architect, on the interior.
- Holes: Drilled for adjustable shelf clips at 32mm on center.
- Front and bottom edges: Banded with 3mm PVC edging.
- Ends: Bored to accept dowelled top and bottom.
- Ends to be rabbeted to accept recessed back.

F. Fixed Intermediates and Adjustable Shelves:

- Particleboard factory laminated on both sides with cabinet liner unless otherwise noted.
- Edges: All four edges shall be banded with 1mm PVC edging.
- Exposed cabinet interior and shelves to be high pressure plastic laminate. Shelf ledges bound using 1mm PVC edging, color and pattern to closely match plastic laminate on all four sides.
- Shelves up to 30 inches wide: 3/4 inch thick.
- Shelves wider than 30 inches: 1 inch thick.
- No shelves are to be provided over 48 inches wide.
- Library shelves edges and surfaces: Faced with plastic laminate only, not to exceed 36 inches wide.
- Shelves: Adjustable to 32mm on center.

G. Cabinet Back:

- Standard recessed cabinet back: 1/4 inch thick prefinished hardboard.
- Color: Match cabinet interior.
- Sink cabinets: Removable from inside.
- Exposed back on fixed or movable cabinets: Particleboard, 3/4 inch thick, laminated with high pressure laminate on the exterior surface and high pressure laminate cabinet liner on interior surface. Color as selected by Architect.

H. Cabinet Doors and Drawer Fronts:

- Particleboard, 3/4 inch thick, factory laminated with a vertical surface of high pressure laminate on the exposed surface, and high pressure cabinet liner on the interior surface. Color as selected by Architect.
- Edges: 3mm PVC edge, eased edges, hot melt glue machine applied. Color as selected by Architect.
- Double doors: Provide on cabinets in excess of 24 inches in width.

I. Drawers:

- Sides, back, sub-front and bottom: 1/2 inch particleboard overlaid with thermolused melamine on both faces. Bottoms are tongued into sides, back and sub-front; glued and clamped to produce a rigid square drawer. Interior face color to match cabinet interiors.
- Drawer boxes: Attached to a separate 3/4 inch thick minimum face panel.
- Top edges of drawer box: 1mm PVC edge banded in matching color.
- Construct drawers with dowels spaced no greater than 2 inches on center.
- Mount drawers with positive "IN" and "OUT" stops to provide permanent alignment and quiet operation.
- Drawer fronts that impact cabinet body will not be acceptable.
- Doweled or lock-shoulder joint; glued under pressure.
- Equip sides of file drawer with extruded aluminum edge on sides, or full Pendaflex type folder hanger arrangement designed to support hanging file folder.
- Paper storage drawers wider than 3 feet 6 inches shall have a 1 inch x 2 inch center rail glued and screwed to drawer box frame.

J. Finished Backs: High pressure decorative laminate exterior where exposed, factory applied to 3/4 inch particleboard with high pressure cabinet liner where semi-exposed.

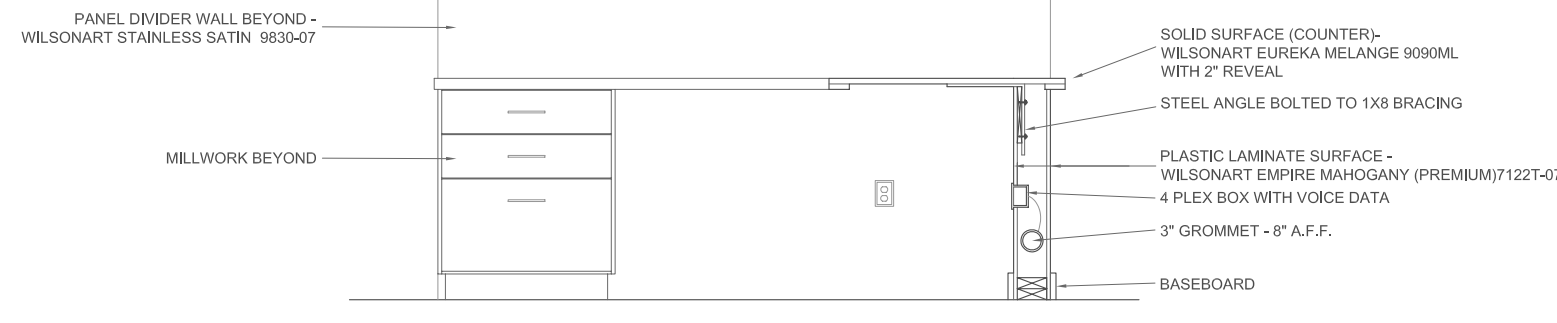
PART 3 EXECUTION

3.1 EXAMINATION

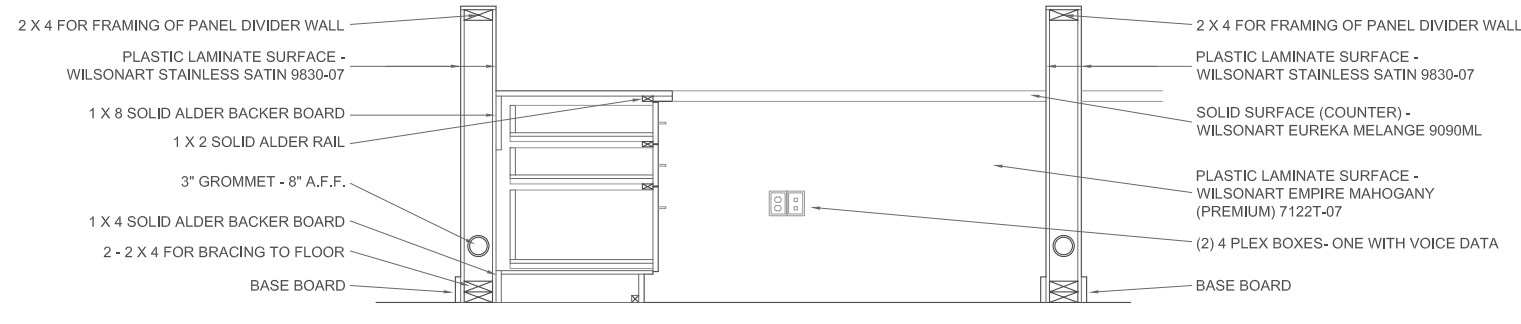
- A. Verification of Conditions: Examine subsurfaces to receive Work and report detrimental conditions in writing, with a copy to Architect. Failure to observe this requirement constitutes a waiver to subsequent claims to the contrary and holds Contractor responsible for corrections) Architect may require. Commencement of Work will be construed as acceptance of subsurfaces.
- Verify, before proceeding with this Work, that required inspections of existing conditions have been completed.

3.2 INSTALLATION

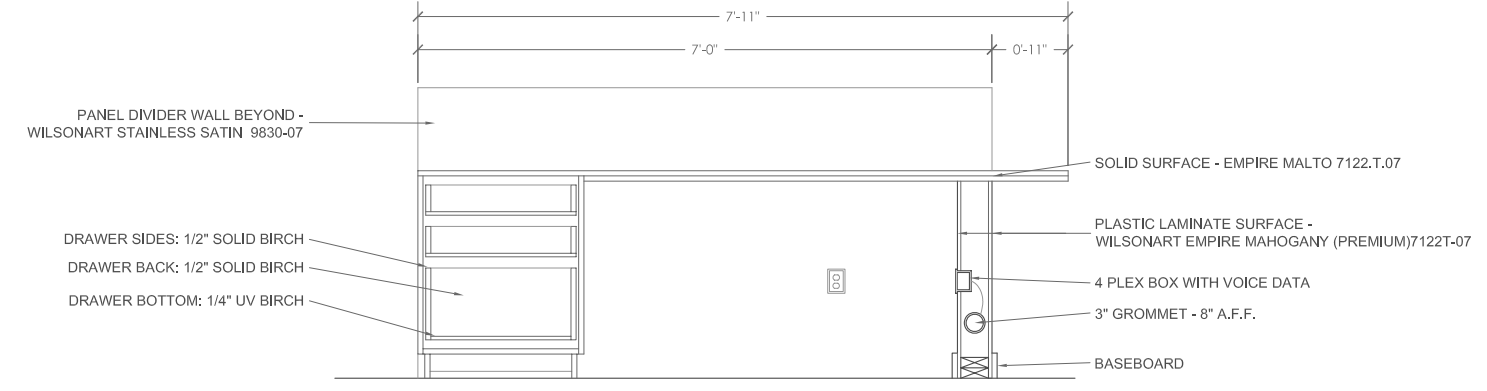
- A. Install casework plumb, level, true and straight with no distortions and in accordance with manufacturer's directions. Shim as required, using concealed shims. Where casework abuts other finished work, scribe and cut for accurate fit.
- B. Adjust doors and drawers to operate smoothly without warp or bind.
- C. Casework shall be securely fastened to walls, floors and other units as necessary for units to remain in place without movement under normal loading, except units not normally in a fixed position. All exposed fastener heads shall be round head type.
- D. Upon completion of installation, repair, remove or replace defective work as directed. Touch up as required and remove or refinish damaged or soiled areas as directed.



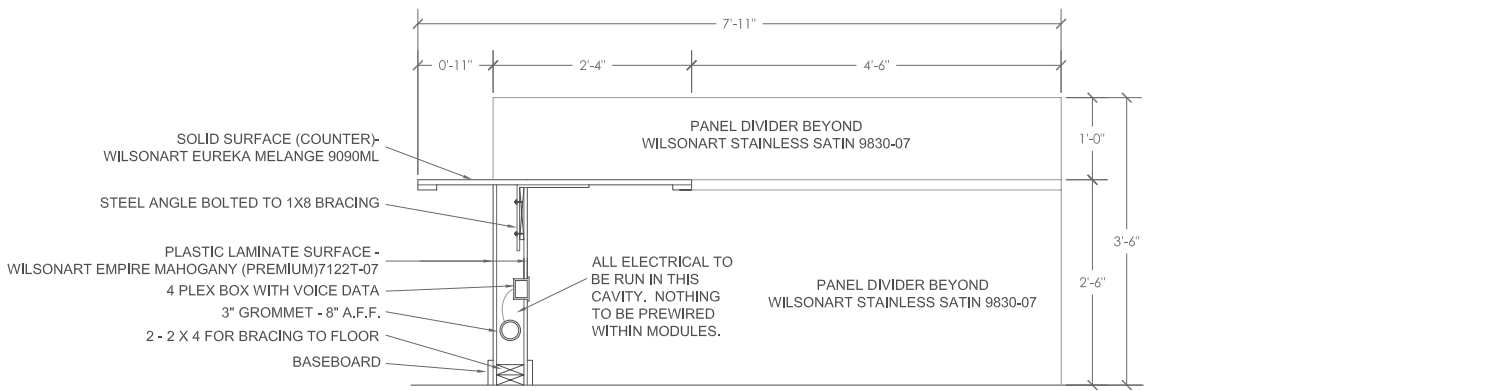
SECTION 4
NOT TO SCALE



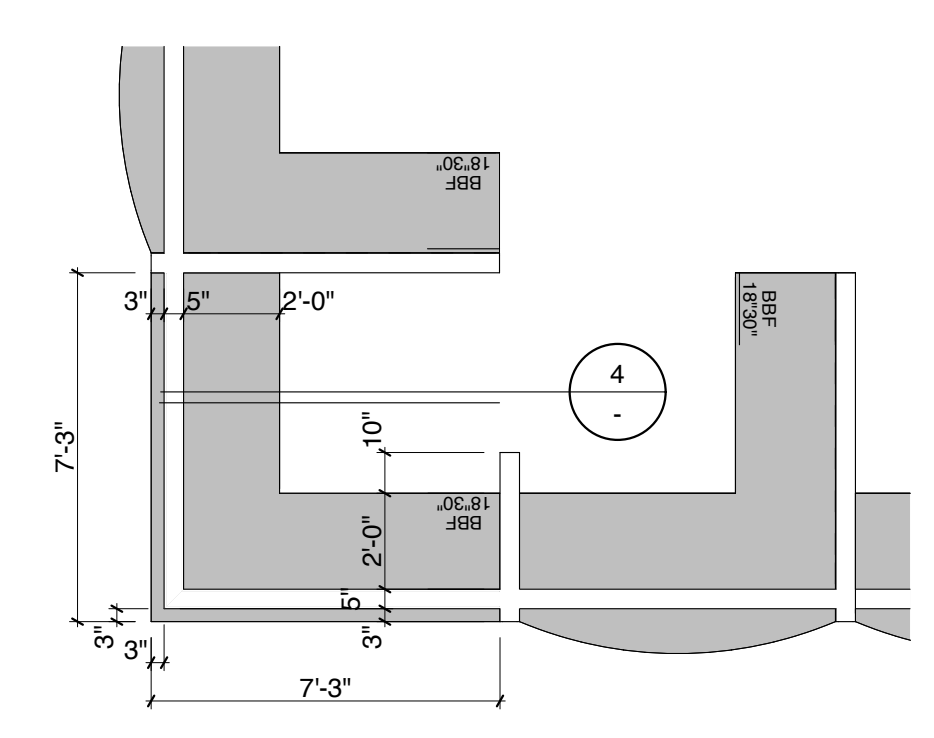
SECTION 2
NOT TO SCALE



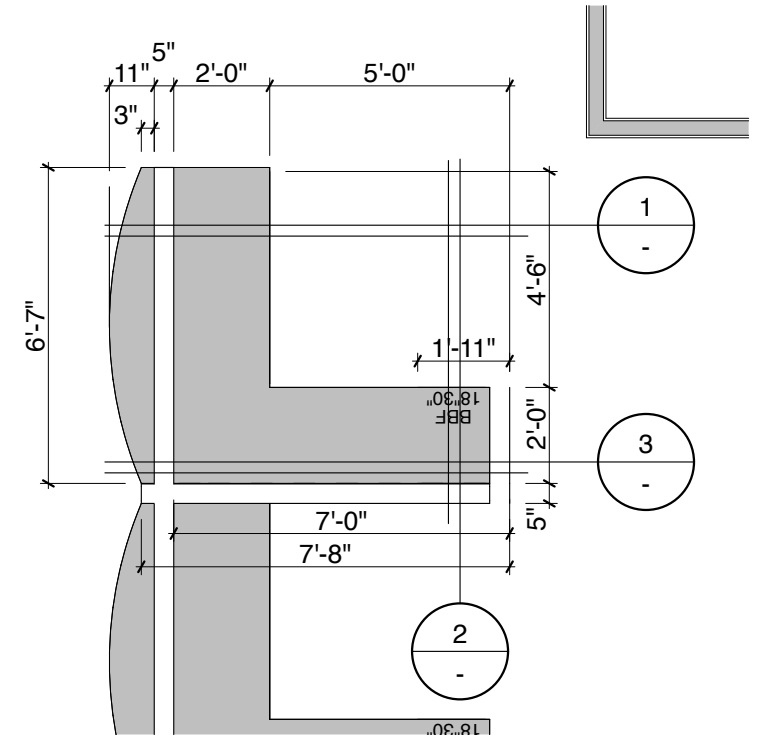
SECTION 3
NOT TO SCALE



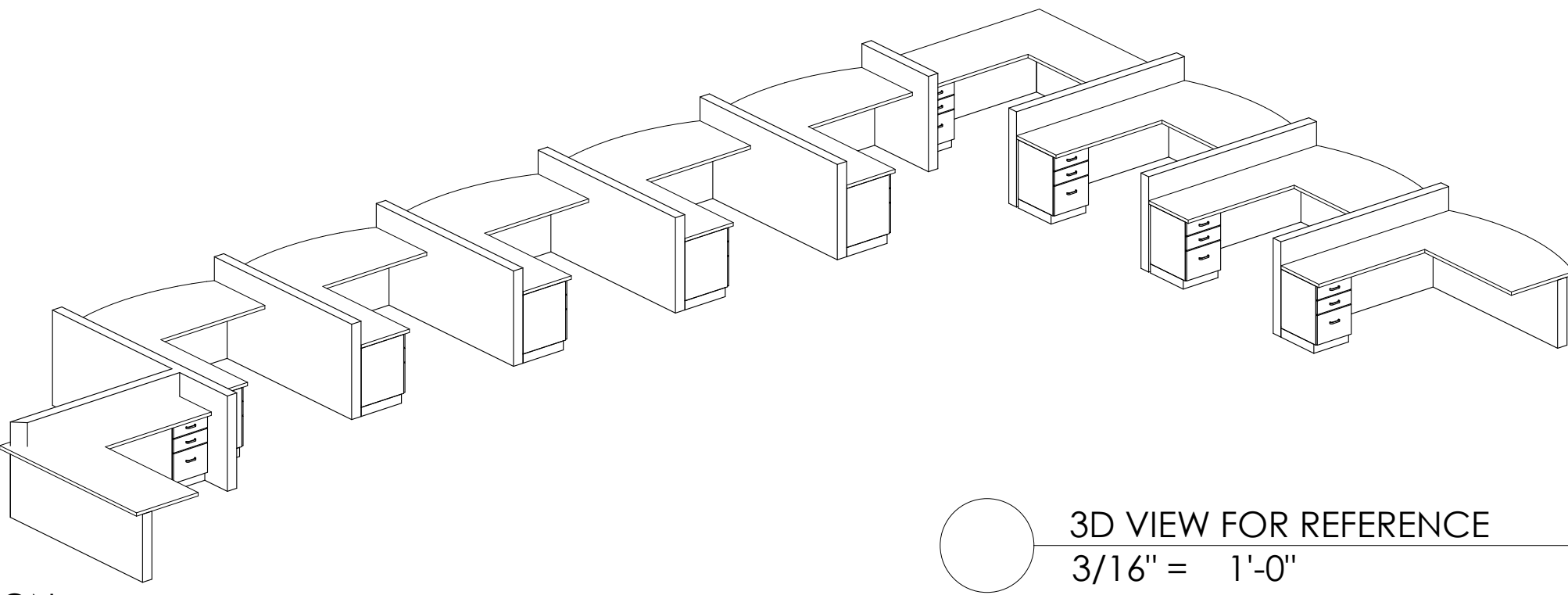
SECTION 1
NOT TO SCALE



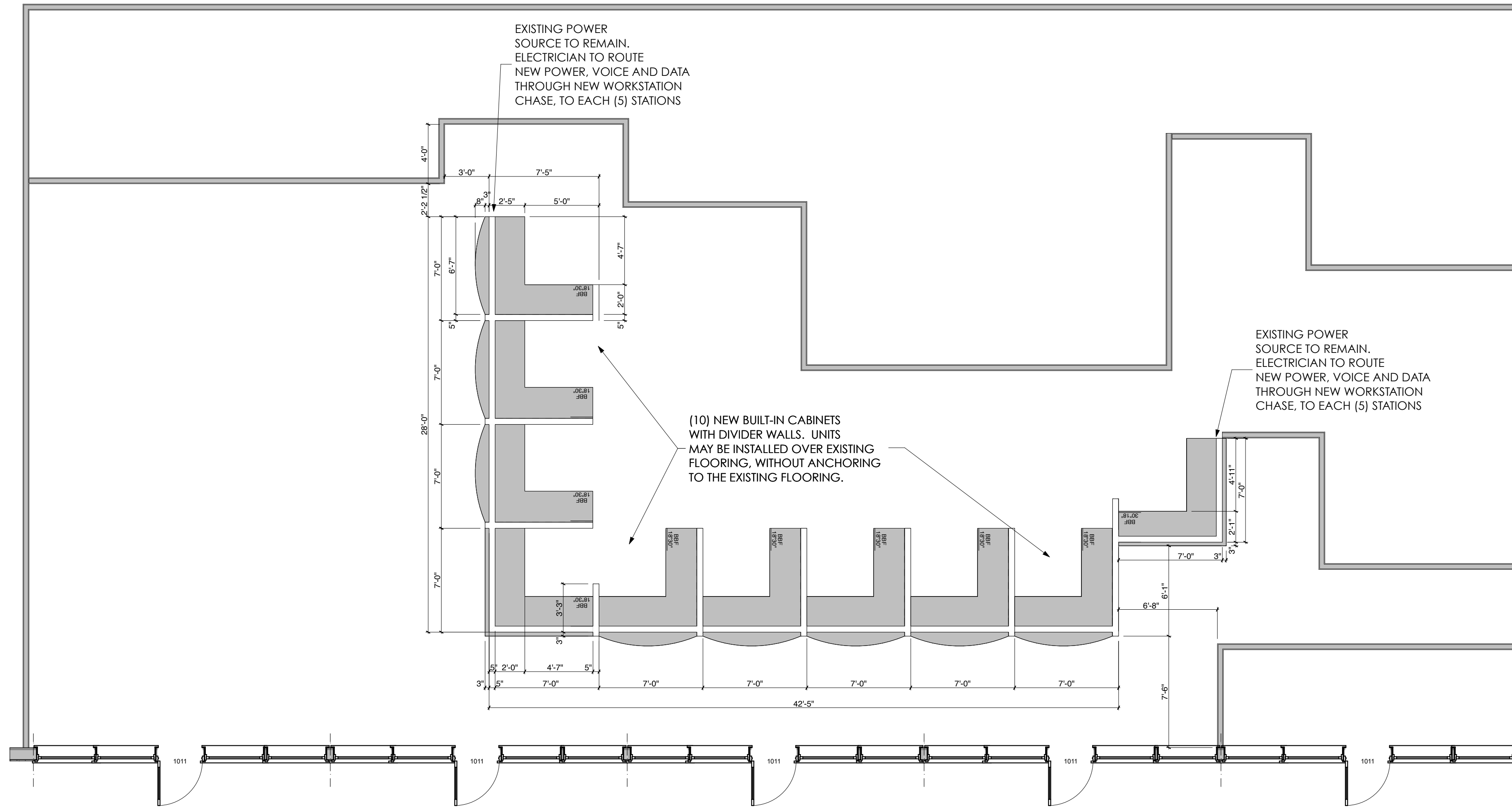
ENLARGED TYPICAL WORK STATION
1/4" = 1'-0"



ENLARGED TYPICAL WORK STATION
1/4" = 1'-0"



3D VIEW FOR REFERENCE
3/16" = 1'-0"



FIRST FLR PLAN
3/16" = 1'-0"

city of hammond
 department of motor vehicles

1320 North Morrison Blvd., Suites 110-113 Hammond, LA 70401

project number
pa_1418
 date of issue
09.02.2014
 project phase
city submittal
 revision no. revision date

THIS DRAWING IS AN INSTRUMENT OF SERVICE & THE PROPERTY OF PISTORIUS ASSOCIATES, LLC



drawing file
 title sheet
 drawing no.
G-001